

GENERAL INFORMATION

ACCESS TO KANAZAWA DOWNTOWN

From Komatsu Airport: Take a bus for Kanazawa Station via City Center and get off at Korinbo bus stop. If you are going to your hotel directly, ask at the airport information the bus stop where you should get off. Before you get on the bus, buy a ticket at the ticket office outside the airport building. The fare is 1,100JPY. It takes about 50 minutes to Korinbo. The venue of POSMOL2013 is a few minutes walk from Korinbo bus stop. DO NOT take a Super Express bus because it will not go to Kanazawa Downtown.

From JR Kanazawa Station: Take a taxi to Kanazawa Bunka Hall or your hotel. The fare is about 1,000JPY. The downtown can also be accessed by a local bus. Take a bus at the bus stop (number 7, 8, 9 or 10) and get off at Korinbo. It takes about 10 minutes to Korinbo. The fare is 200JPY. You must get coins ready before you get on the bus. It takes about 30 minutes from Kanazawa Station to Korinbo area on foot.

REGISTRATION

The registration desk will be on the second floor of Kanazawa Bunka Hall during 10:00 - 18:00 hrs on Friday, July.

VENUE FOR SCIENTIFIC PRESENTATIONS

The venue for all the scientific presentations is Kanazawa Bunka Hall. The opening session, the plenary sessions, and the sessions for the ems progress reports will take place in Room II on the second floor. The positron progress report sessions will take place in Room III on the third floor. The poster session will be held in Room I on the 1st floor and Room II.

ORAL PRESENTATIONS

Room II and Room III are equipped with a PC running on Windows 7 having VGA connections. It is installed with Microsoft Office 2010 and Adobe Reader 10. Speakers are recommended to bring their presentations in ppt, pptx or pdf format on a USB memory key. Speakers should upload their presentation files on the PC before the start of the sessions. Speakers who want to use their own Mackintosh should bring a Mini DVI-VGA or Mini DisplayPort-VGA adapter.

POSTER PRESENTATIONS

Poster boards of 120cm x 210cm will be provided. A poster of A0 portrait size (84cm x 118.8cm/33inch x 46.8inch) will fit the board. Posters may be put up on the afternoon of Friday and must be removed by the end of the afternoon session on Sunday.

BADGES

Please have your name tag on at all times. It serves as your entry ticket for the Welcome Reception and the Conference Dinner.

WELCOME RECEPTION AND CONFERENCE DINNER

Welcome Reception will be held in the evening of Friday at Restaurant Roi on the 12th floor of Kanazawa New Grand Hotel, located next to Kanazawa Bunka Hall. Conference Dinner will be held in the evening of Sunday at Kinsen on the 4th floor of the same hotel.

POSTER PRIZE

The International Advisory Committees and the Local Organizing Committee will award a prize to the best poster presented by a graduate student at POSMOL2013. The winner will be announced during the Dinner on Sunday.

INTERNET ACCESS

Wireless internet access is available in Kanazawa Bunka Hall. Details are provided on a separate sheet in your conference pack.

PERSONAL COMPUTERS FOR DELEGATES

Public computers will NOT be provided for personal use of the delegates. Those who want to use PC for e-mail check should bring their own computer or tablet.

EPJD TOPICAL ISSUE

A Topical Issue of the European Physical Journal D (atomic, Molecular, Optical and Plasma Physics) is commissioned on topics related to POSMOL2013. This Issue will contain full-length peer-reviewed papers of original scientific work. The deadline for manuscript submission will be 31 October 2013.

MEALS

Kanazawa Bunka Hall is located in the center of Kanazawa city. You can find good restaurants near the venue. There are a lot of good restaurants in Omi-cho Market, which is about 10 minutes walk from the venue.

COFFEE AND TEA

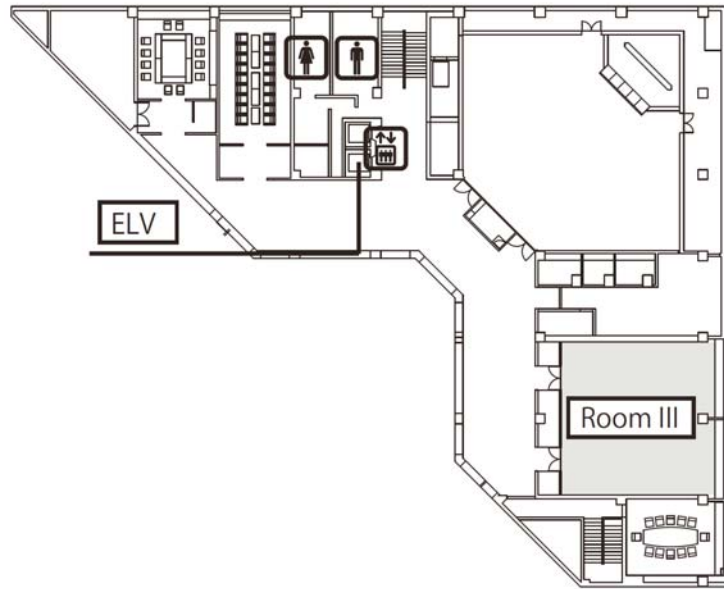
Coffee and tea will be provided in the lobby in front of Room II on the second floor.

CLIMATE

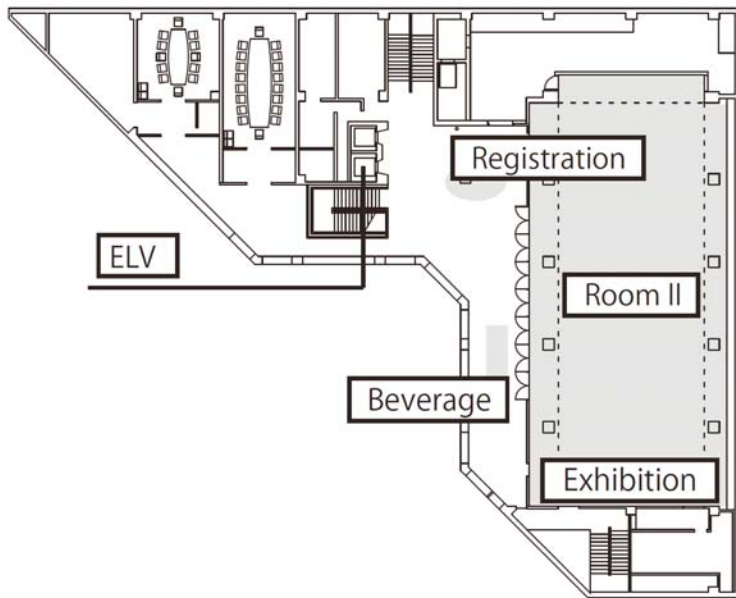
The temperature in Kanazawa during POSMOL2013 will range between 25°C and 35°C. Humidity is usually high. It is recommended to bring your cap, hat, or parasol for sightseeing.

POSMOL2013 Programme

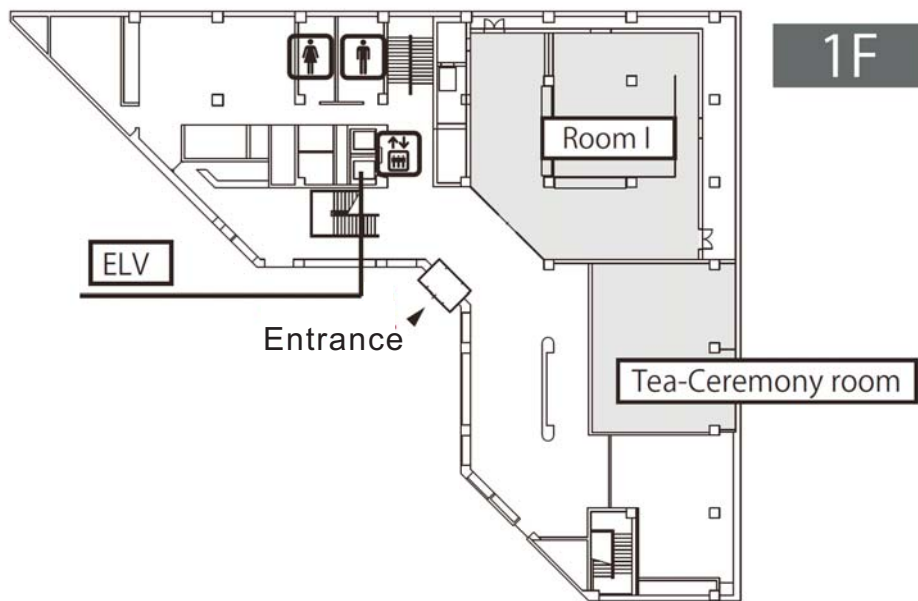
Time	Friday 19 July	Saturday 20 July	Sunday 21 July			
		[Plenary talk, Room II] Chair: Kouchi	[Plenary talk, Room II] Chair: Hyodo			
9:15–10:00		Ito (PL-2)	Ballmoos (PL-4)			
10:00–10:20	Registration	coffee	coffee			
		[Session C]	[Session F]			
		[ems, Room II] Chair: Tanuma	[positron, Room III] Chair: Shimamura	[ems, Room II] Chair: Limao-Vieira	[positron, Room III] Chair: Mohallem	
10:20–10:50		Dujko (TE-06)	Shipman (TP-06)	Kopyra (TE-14)	Guessoum (TP-14)	
10:50–11:20		Franck (TE-07)	Michishio (TP-07)	Takayanagi (TE-15)	Wada (TP-15)	
11:20–11:50		Borghesani (TE-08)	Cassidy (TP-08)	Eden (TE-16)	Armitage (TP-16)	
11:50–12:20		Satoh (TE-09)	Barker (TP-09)	Curik (TE-17)	Bankovic (TP-17)	
12:20–14:00		Lunch	Lunch	Lunch		
	13:30–14:00 [Opening, Room II]					
	[Plenary talk, Room II] Chair: Laricchia	[Plenary talk, Room II] Chair: Ingolfsson	[Plenary talk, Room II] Chair: Allan			
14:00–14:45	Mills (PL-1)	Makabe (PL-3)	Buckman (PL-5)			
	[Session A]	[Session D]	[Session G]			
	[ems, Room II] Chair: Field	[positron, Room III] Chair: Campeanu	[ems, Room II] Chair: Fabrikant	[positron, Room III] Chair: Danielson	[ems, Room II] Chair: Cho	[positron, Room III] Chair: Kuroda
14:50–15:20	Mason (TE-01)	Fursa (TP-01)	Garcia (TE-10)	Cooke (TP-10)	Jones (TE-18)	Fujiwara (TP-18)
15:20–15:50	da Silva (TE-02)	Nagumo (TP-02)	Lima (TE-11)	Deller (TP-11)	Prabhudesai (TE-19)	Storry (TP-19)
15:50–16:10	tea	tea	tea			
	[Session B]	[Session E]	[Session H]			
	[ems, Room II] Chair: Krishnakumar	[positron, Room III] Chair: Gribakin	[ems, Room II] Chair: Hoshino	[positron, Room III] Chair: Brawley	[ems, Room II] Chair: van der Burgt	[positron, Room III] Chair: Brusa
16:10–16:40	Slaughter (TE-03)	Natisin (TP-03)	Sullivan (TE-12)	Namba (TP-12)	Gorfinkeil (TE-20)	Van Gorp (TP-20)
16:40–17:10	Davis (TE-04)	Tachikawa (TP-04)	Fedor (TE-13)	Van der Werf (TP-13)	Sakai (TE-22)	Mariazzi (TP-21)
17:10–17:40	Omarsson (TE-05)	Bromley (TP-05)	tea			Sacquin (TP-22)
		Poster Session (17:40–20:00) Room I, Room II				Conference Dinner and Closing at Kinsen (Kanazawa New Grand Hotel, 19:00–21:00)
	Welcome Reception at Restaurant Roi (Kanazawa New Grand Hotel, 18:00 – 20:00)					



3F



2F



1F

Kanazawa Bunka Hall

金沢市街 MAP

～ Let's go to the downtown area ～



Viewpoint Art gallery / Museum etc. Post office Library Store monument / Memorial tablet Police station / Police box School Hospital Bus station Railway station